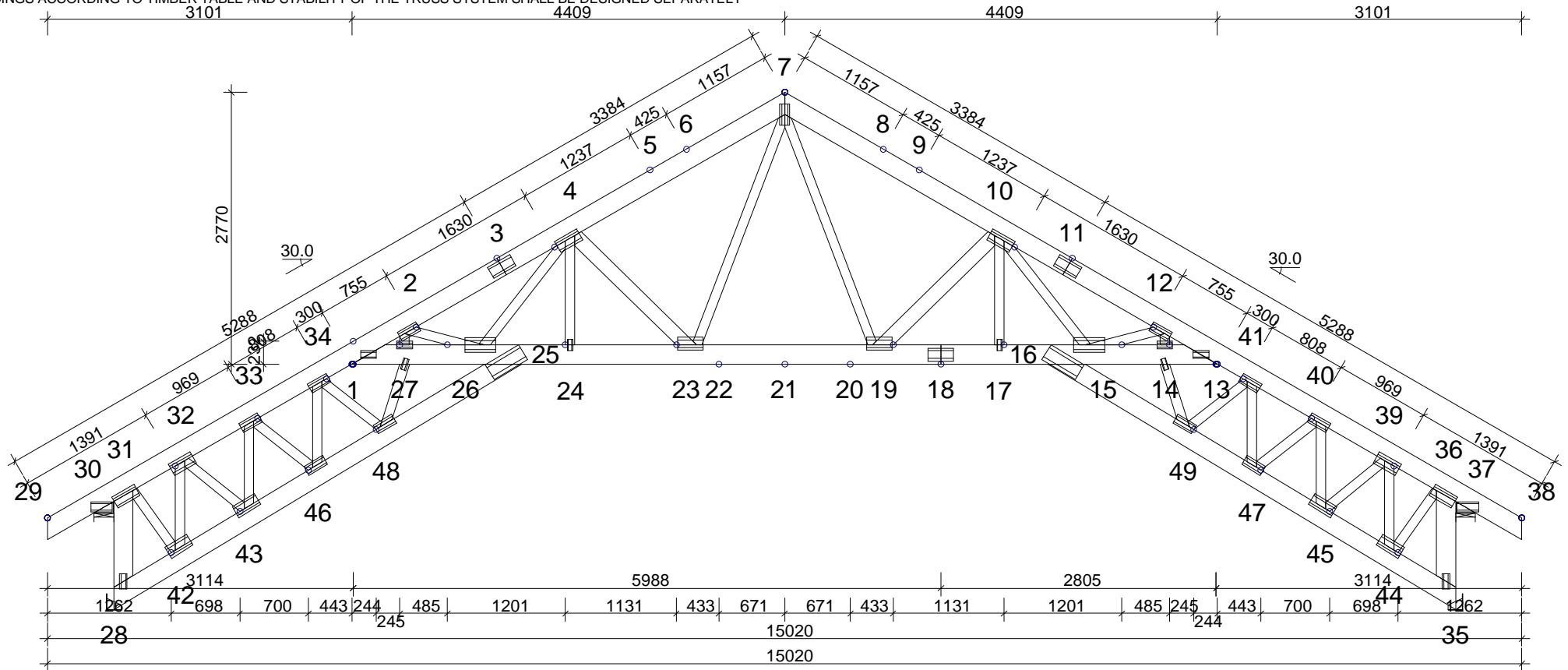


BRACINGS ACCORDING TO TIMBER TABLE AND STABILITY OF THE TRUSS SYSTEM SHALL BE DESIGNED SEPARATELY



SEE CALC.PRINTOUT FOR INFORMATION NOT FOUND IN TABLES

TIMBER: THICKNESS 45 mm 2 PLY				
CONSTR.-PART	DEPTH mm	GRADE	BRACING mm	LOAD N/m ²
7-29	195	K18	400	500
7-38	195	K18	400	500
13-1	195	K18	Full	250
25-28	195	K18	Full	300
16-35	195	K18	Full	300
28-31	195	K18	None	150
35-36	195	K18	None	150
31-42	95	K18	None	
36-44	95	K18	None	
32-43	95	K18	None	
39-45	95	K18	None	
33-43	95	K18	None	
40-45	95	K18	None	
33-46	95	K18	None	
40-47	95	K18	None	
34-46	95	K18	None	
41-47	95	K18	None	
34-48	95	K18	None	
41-49	95	K18	None	
4-24	95	K18	None	
10-17	95	K18	None	
4-23	145	K18	None	
10-19	145	K18	None	
4-26	95	K18	None	
10-15	95	K18	None	

GENERAL SETTINGS:	
TIMBER THICKNESS: (mm)	2 x 45
TRUSS CENTRES: (mm)	1000
CLIMATE CLASS:	2
SAFETY CLASS:	2
LOADS (N/m ²):	
SNOW LOAD (BASE VALUE):	1200
WIND LOAD (BASE VALUE):	965
LIVE LOAD:	NO FIXED RF FREE RF
	1 500 0.50
DEAD LOADS: SEE TIMBER TABLE	
OTHER LOADS AS PER CALC. PRINT-OUT	

GENERAL DIRECTIONS:

THE STRUCTURE HAS BEEN CALCULATED USING COMPUTER PROGRAM "TRUSSCON". LIC.NO: 15323
 CODE TIMBER: BKR03 (BFS2005:18)
 CODE FASTENER: GODKÄNNANDE-REGLER No 4 1974.

VERSION: 2011 SR3c
 TIME: 10.55



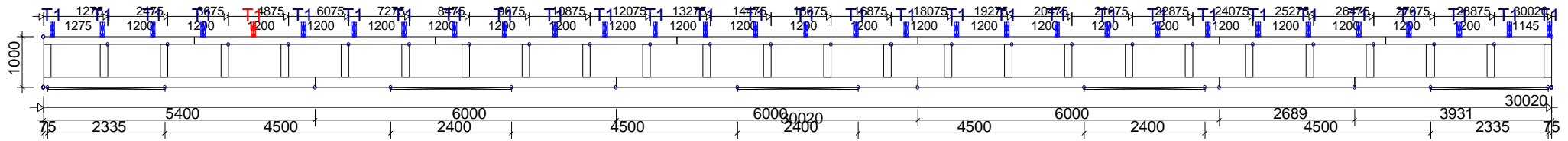
WoodCon, Ltd
 REG.LV41203036961
 Ph:+37129332958
 e-mail: woodcon@woodcon.lv

DRAWN CONSTR.BY	CHECKED	JOB NO.
		Complex_17
, 20080724		

CODE TYPE NO.	DRAWING NUMBER	REG.
	T1	

SCALE 1:60

BRACINGS ACCORDING TO TIMBER TABLE AND STABILITY OF THE TRUSS SYSTEM SHALL BE DESIGNED SEPARATELY



TIMBER: THICKNESS 150 mm				
CONSTR.-PART	DEPTH mm	GRADE	BRACING mm	LOAD N/m ²
1-2	150			
2-12	150			
12-13	150			300
20-3	200			
20-5	200			300
20-6	200			
20-7	200			
30-1	150			
30-2	150			
30-3	150			
30-4	150			
30-5	150			
30-6	150			
30-7	150			
30-8	150			
30-9	150			
41-1	150			
41-2	150			
41-3	150			
41-4	150			
41-5	150			
41-6	150			
41-7	150			
41-8	150			
41-9	150			
41-10	150			
41-11	150			
41-12	150			
41-13	150			
41-14	150			
41-15	150			
41-16	150			
41-17	150			
41-18	150			
41-19	150			
41-20	150			
41-21	150			
41-22	150			
41-23	150			
41-24	150			
41-25	150			
41-26	150			
41-27	150			
41-28	150			
41-29	150			
41-30	150			
41-31	150			
41-32	150			
41-33	150			
41-34	150			
41-35	150			
41-36	150			
41-37	150			
41-38	150			
41-39	150			
41-40	150			
41-41	150			
41-42	150			
41-43	150			
41-44	150			
41-45	150			
41-46	150			
41-47	150			
41-48	150			
41-49	150			
41-50	150			
41-51	150			
41-52	150			
41-53	150			
41-54	150			
41-55	150			
41-56	150			
41-57	150			
41-58	150			
41-59	150			
41-60	150			
41-61	150			
41-62	150			
41-63	150			
41-64	150			
41-65	150			
41-66	150			
41-67	150			
41-68	150			
41-69	150			
41-70	150			
71-72	150			

GENERAL SETTINGS:	
TIMBER THICKNESS: (mm)	150
TRUSS CENTRES: (mm)	1200
CLIMATE CLASS:	2
SAFETY CLASS:	2
LOADS (N/m ²):	
SNOW LOAD (BASE VALUE):	1200
WIND LOAD (BASE VALUE):	965
DEAD LOADS: SEE TIMBER TABLE	
OTHER LOADS AS PER CALC. PRINT-OUT	

GENERAL DIRECTIONS:
 THE STRUCTURE HAS BEEN CALCULATED USING COMPUTER PROGRAM "TRUSSCON". LIC.NO: 15323
 CODE TIMBER: BKR03 (BFS2005:18)
 CODE FASTENER: GODKÄNNANDE-REGLER No 4 1974.

VERSION: 2011 SR3c
 TIME:

		WoodCon, Ltd REG.LV41203036961 Ph:+37129332958 e-mail: woodcon@woodcon.lv	
		DRAWN CONSTR.BY CHECKED JOB NO. Complex_17	SCALE 1:115
		CODE TYPE NO.	DRAWING NUMBER VE1
			REG.