

### GENERAL NOTES

1. This drawing and associated calculations is the property of WoodCon, Ltd. Any copying, distribution and usage of these drawings without the permission from WoodCon, Ltd., is not allowed.
2. Loads:
  - Dead load roof: 650 N/m<sup>2</sup>
  - Dead load ceiling: 300 N/m<sup>2</sup>
  - Snow load: 2000 N/m<sup>2</sup>
  - Wind load, (velocity pressure): 852.998 N/m<sup>2</sup>
  - Live load attic: 2000 N/m<sup>2</sup>
3. A detailed design of suspension between construction parts is not made by WoodCon, Ltd.. This is assumed to be made by the client/building designer.
4. It needs to be verified that the roof layout, trusses and supporting system is in compliance with the wishes/demands of the client before the production of the trusses starts.
5. Wind bracing of the roof:  
The trusses are stiff in their own plane, but needs to be braced out of plane according to the truss calculation. The bracing system of the building is not described by WoodCon, Ltd., but there is a reference to the assembly instruction and type drawing TB96-10.

### **TRUSS PLAN**

Roof surface m2 230.156



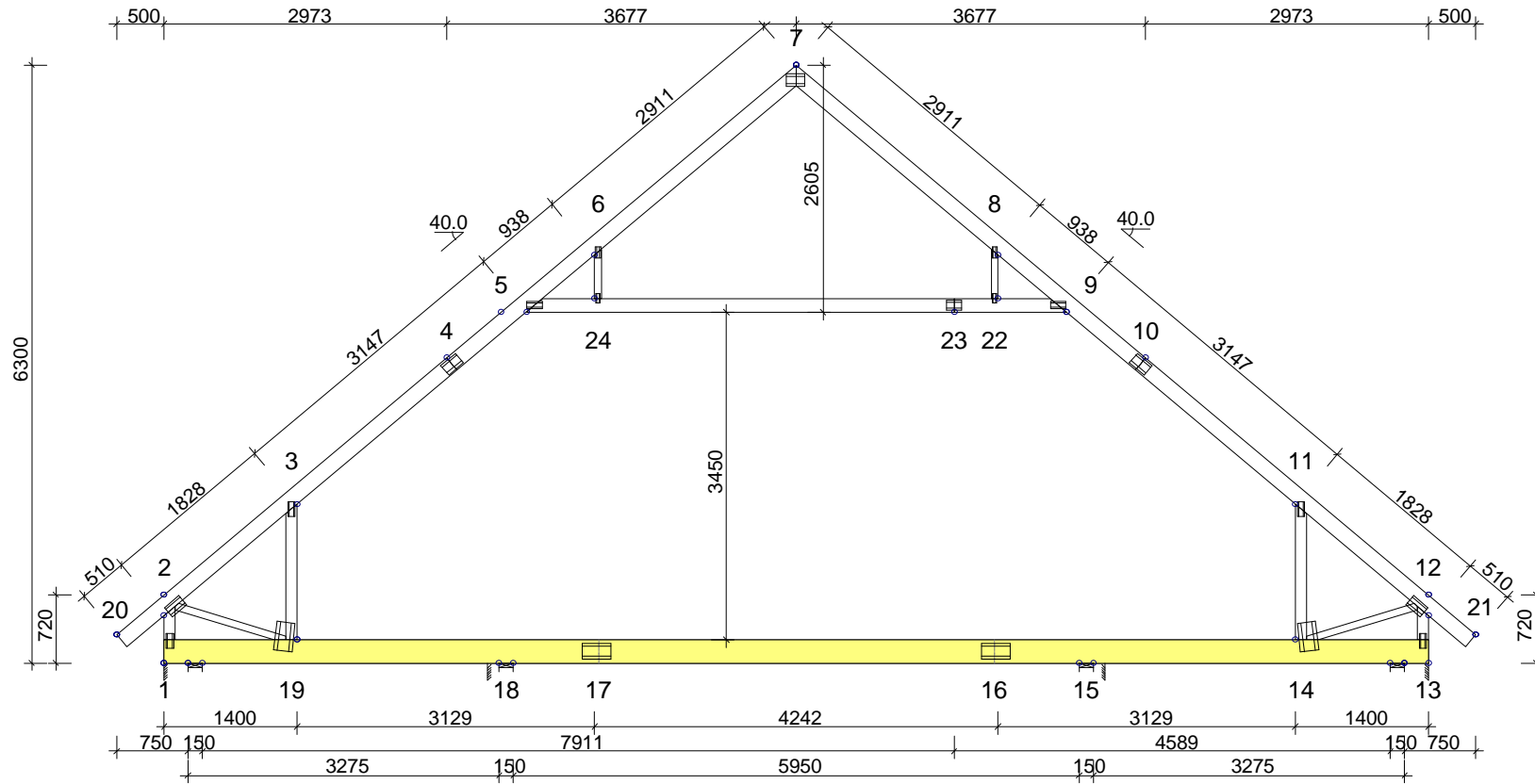
Woodcon, Ltd.  
REG.LV41203036961  
Ph:+37129332958  
e-mail: woodcon@woodcon.lv

|       |         |                      |
|-------|---------|----------------------|
| DRAWN | CHECKED | JOB NO.<br>Complex_8 |
|       |         | 20120403             |

|               |                |      |
|---------------|----------------|------|
| CODE TYPE NO. | DRAWING NUMBER | REG. |
|---------------|----------------|------|

SCALE 1:100

BRACINGS ACCORDING TO TIMBER TABLE AND STABILITY OF THE TRUSS SYSTEM SHALL BE DESIGNED SEPARATELY



| TIMBER: THICKNESS 45 mm |          |       |            |                       |
|-------------------------|----------|-------|------------|-----------------------|
| CONSTR.-PART            | DEPTH mm | GRADE | BRACING mm | LOAD N/m <sup>2</sup> |
| 1-2                     | 120      | C18   | None       | 150                   |
| 7-20                    | 170      | C24   | 400        | 650                   |
| 7-21                    | 170      | C24   | 400        | 650                   |
| 12-13                   | 120      | C18   | None       | 150                   |
| 13-1                    | 245      | C24   | Full       | 300                   |
| 5-9                     | 145      | C24   | Full       | 300                   |
| 3-19                    | 120      | C18   | None       | 150                   |
| 11-14                   | 120      | C18   | None       | 150                   |
| 2-19                    | 70       | C18   | None       |                       |
| 12-14                   | 70       | C18   | None       |                       |
| 6-24                    | 70       | C18   | None       |                       |
| 8-22                    | 70       | C18   | None       |                       |
| SC 1-13                 | 1x45x245 | C24   |            |                       |

| GENERAL SETTINGS:                  |         |
|------------------------------------|---------|
| TIMBER THICKNESS: (mm)             | 45      |
| TRUSS CENTRES: (mm)                | 657     |
| CLIMATE CLASS:                     | 2       |
| SAFETY CLASS:                      | 2       |
| BRACING: SEE TIMBER TABLE          |         |
| LOADS (N/m <sup>2</sup> ):         |         |
| SNOW LOAD (BASE VALUE):            | 1400    |
| WIND LOAD (BASE VALUE):            | 592     |
| LIVE LOAD:                         | NO FREE |
|                                    | 1 500   |
|                                    | 2 2000  |
|                                    | 3 500   |
| DEAD LOADS: SEE TIMBER TABLE       |         |
| OTHER LOADS AS PER CALC. PRINT-OUT |         |

**GENERAL DIRECTIONS:**  
 THE STRUCTURE HAS BEEN CALCULATED USING COMPUTER PROGRAM "TRUSSCON". LIC.NO: 15323  
 CODE TIMBER: EN 1995-1-1:2004 + SS-NA  
 LOADS: EN 1991 + SS-NA  
 FULL DESIGN RESULTS AS PER CALC. PRINT-OUT

LOAD DISTRIBUTING FLOOR  
 GLUE NAILED 22 mm PARTICLE BOARD OR EQUIV.

VERSION: 2011 SR3c  
 TIME: 11.23

|               |                |   |         |
|---------------|----------------|---|---------|
|               |                | Woodcon, Ltd.<br>REG.LV41203036961<br>Ph:+37129332958<br>e-mail: woodcon@woodcon.lv |         |
|               |                | DRAWN CONSTR.BY   | CHECKED |
| ,20120315     |                | Complex_8   |         |
| CODE TYPE NO. | DRAWING NUMBER | REG.  |         |
|               | T1             |   |         |